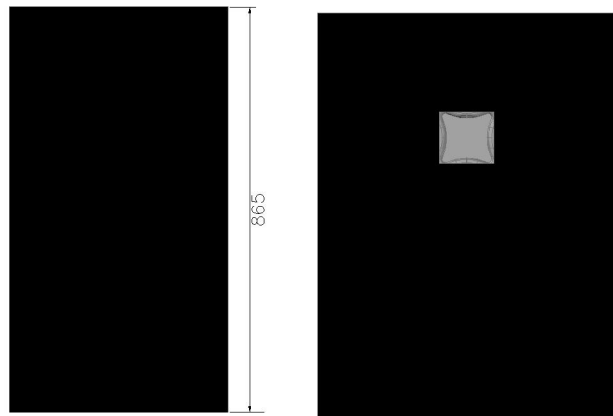
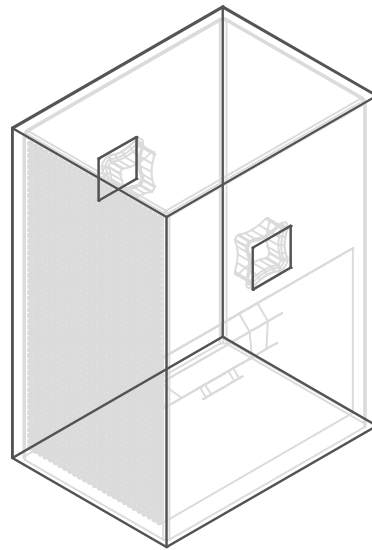
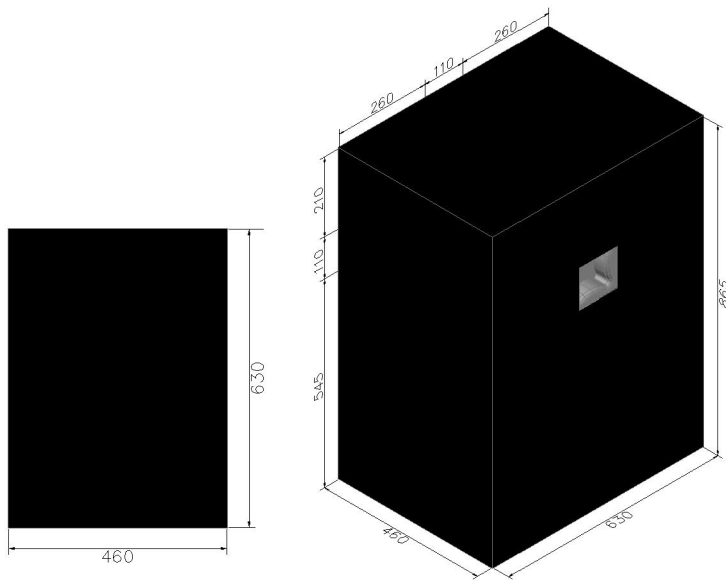
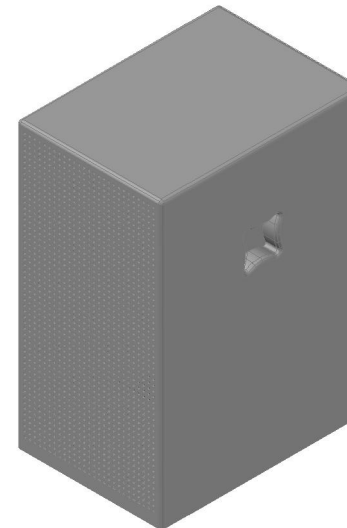


Drop over cover for an Ev Eliminator i Sub. Unit size 438mm x 610mm x 859mm high. Make covers Internal dimensions 460mm x 630mm x 865mm high. Black Nypad cover, open at base to fit over speaker. Two cut outs, one on each side, for access to unit handles. Room for print on front if required.



SCALE: 1:16



DATE:	26/11/09
REVISION:	1
DRAWN BY:	A.M.M.
TITLE:	Drop over cover for an Ev Eliminator i Sub.